

Purpose: To provide detailed instructions describing how to replace the C1 lines on NEOS canopies.

Applicability: This Technical Order is applicable to the following canopies: P/N 317524-XXX NEOS with Serial Numbers PRIOR to 24112612.

Edition:

Revision	Written by	Aproved by	Date
Initial-00	Óscar Santos	F. Zapirain	August 29 th 2011

Authorized Repairman: FAA Senior or Master Parachute Rigger (or foreign equivalent).

Materials:

P/N	DESCRIPTION / DESCRIPCIÓN	QTY.
K-317524-XXX	Neos Repair Kit (2 x C1 line)	1

Note: XXX corresponds to the size of the canopy. Check that the size of your Kit is the same as the size of your Neos canopy.

Procedure:

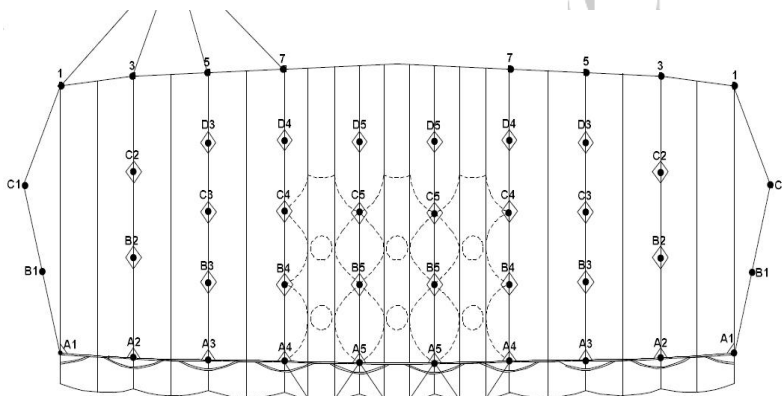


Fig. 1. Distribution of the lines in the Neos canopy.



Fig. 2. Hang the canopy with the suspension lines at the same height. If the parachute is assembled on risers, make sure that they are the same length.

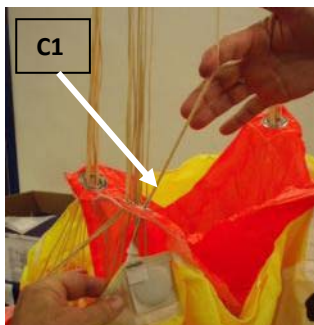


Fig. 3. Follow the C1 line from the canopy to the quick link.

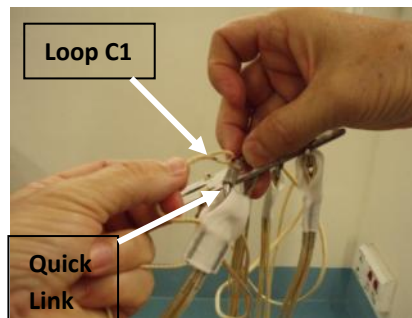


Fig. 4. Remove the C1 line from the quick link.

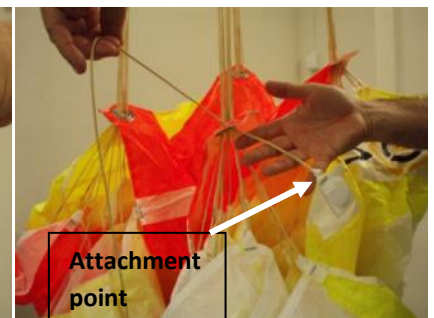


Fig. 5. Follow the C1 line to the attachment point.

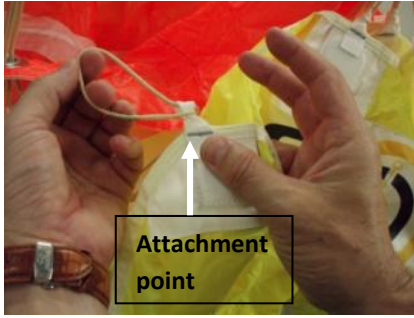


Fig. 6. Undo the knot at the attachment point.

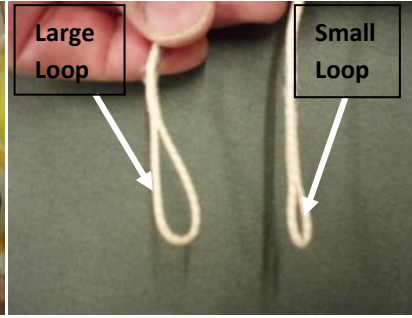


Fig. 7. Identify the large and small loops at the ends of the new C1 lines provided.

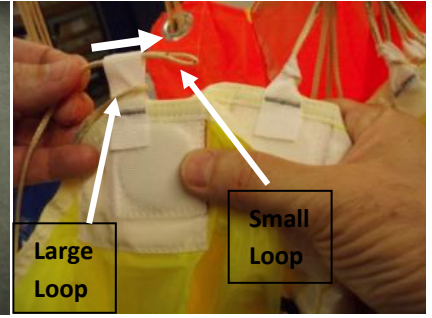


Fig. 8. First, pass the canopy attachment point through the large loop. Then pass the small loop through the attachment point.



Fig. 9. Apply tension on the C1 line to fix the knot.



Fig. 10. Check the knot orientation



Fig. 11. Make sure there is no twist along the C1 line.



Fig. 12. Pass the C1 line through the corresponding slider grommet.

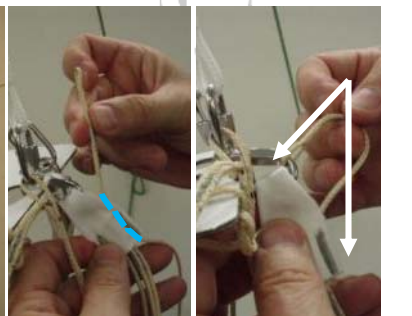


Fig. 13. Pass the line through the corresponding bumper. Attach the small loop of the C1 line to the corresponding quick link.

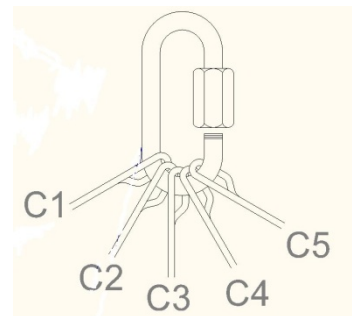


Fig. 14. The position of the C1 line attached to the quick link has to be at the outer position, as shown in Fig. 14, in both C1 lines.



Fig. 15. Take the C1 and B1 attachments and check that they are at the same height.

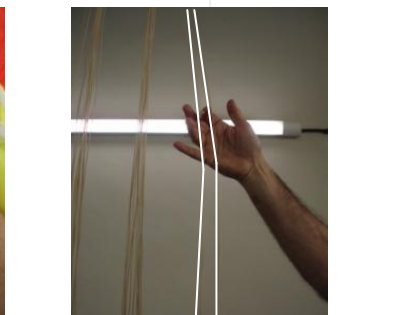


Fig. 16. Check that the line is not entangled.



Fig. 17. When the modification is completed, mark "C1" with permanent marker in the inspector box on the warning label.